



MONTHLY MEMBERSHIP PROGRESS REPORT

District 19 A

Results as of: 2/28/2015

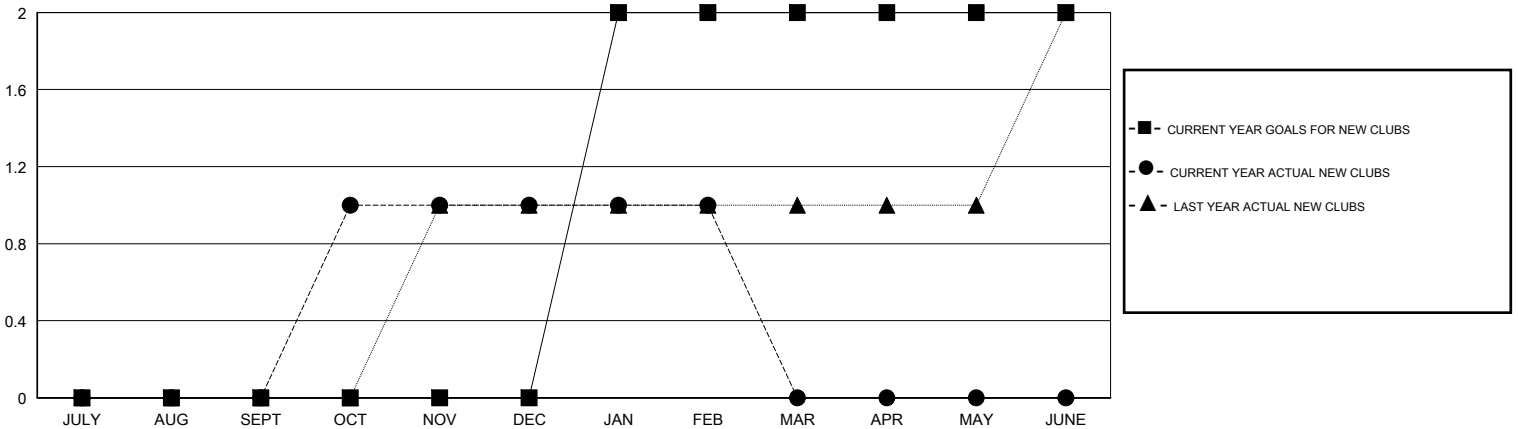
GMT: DENNIS STEVENSON

LOCATION BRITISH COLUMBIA

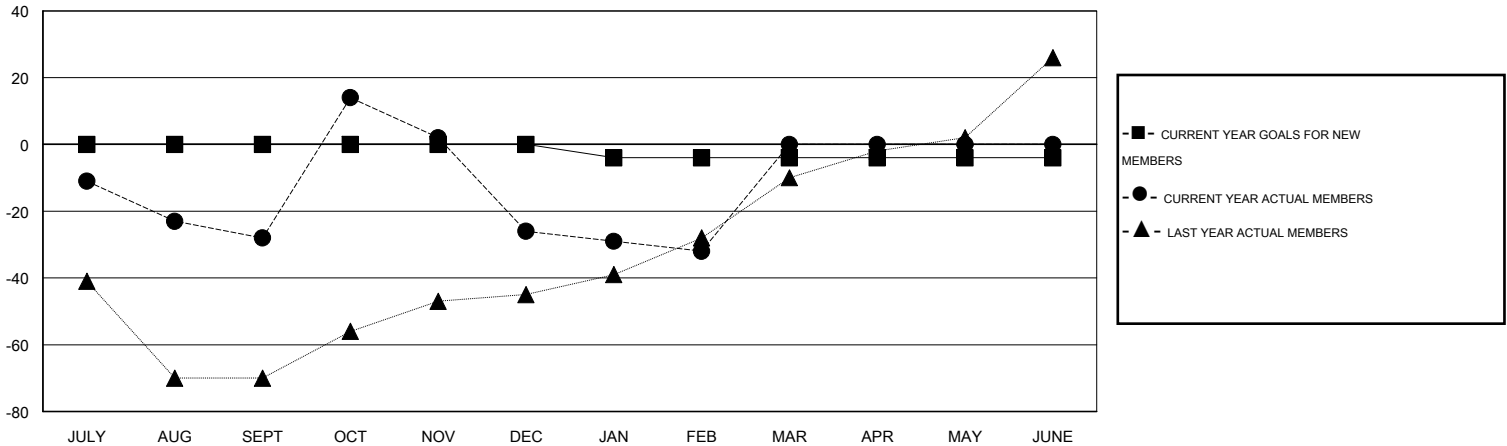
GMT CA 2

Clubs					Members				
RESULTS FOR 2014-2015					RESULTS FOR 2014-2015				
QUARTER	NEW CLUB GOAL	NEW CLUBS	DROPPED CLUBS	NET GAIN/LOSS	QUARTER	NEW MEMBER GOAL	CHARTER AND NEW MEMBERS ADDED	DROPPED MEMBERS	NET GAIN/LOSS
JULY/AUG/SEPT	0	0	0	0	JULY/AUG/SEPT	0	23	51	-28
OCT/NOV/DEC	0	1	0	1	OCT/NOV/DEC	0	73	71	2
JAN/FEB/MAR	2	0	1	-1	JAN/FEB/MAR	-4	16	22	-6
APR/MAY/JUNE	0	0	0	0	APR/MAY/JUNE	0	0	0	0

GOALS AND ACTUAL NEW CLUBS CUMULATIVE



GOALS AND ACTUAL MEMBERS CUMULATIVE



DROPPED CLUBS: 1	31 CLUBS OF 60 ADDED 1 OR MORE NEW MEMBERS	<u>GENDER DISTRIBUTION</u>	
<u>DROPPED MEMBERS</u>		MALE	670 (58.88%)
DECEASED	10	FEMALE	468 (41.12%)
CLUB CANCELLED	0	<u>FAMILY UNIT MEMBERS</u> 64	
OTHER	134	<u>HEAD OF HOUSEHOLD</u> 32	
TOTAL	144	<u>NON-HEAD OF HOUSEHOLD</u> 32	

[CLICK HERE FOR HEALTH ASSESSMENT DATA](#)